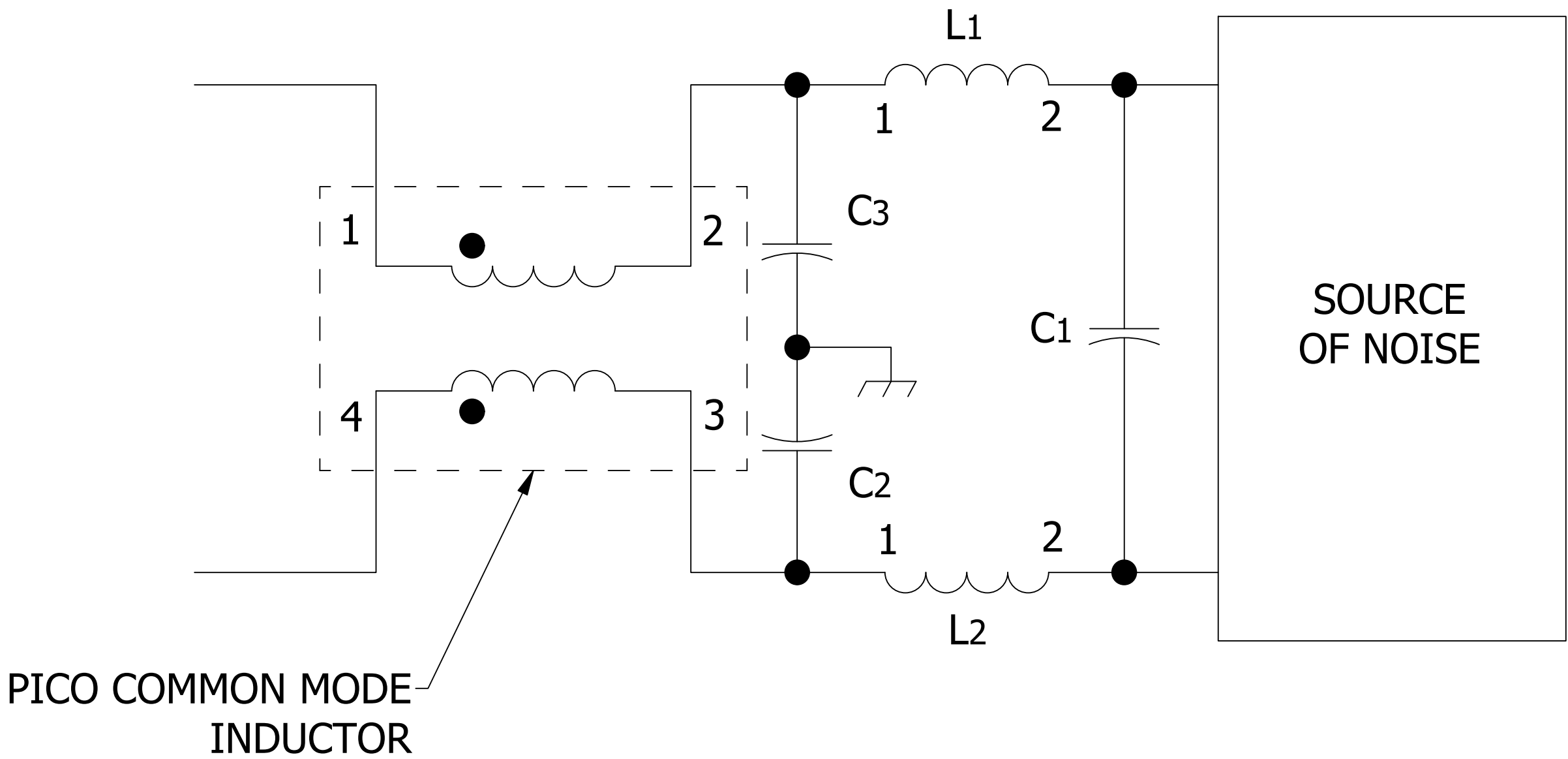


TYPICAL APPLICATION CIRCUIT [HCM SERIES]



A TYPICAL CIRCUIT FOR THE ELIMINATION OF NOISE IS SHOWN ABOVE. THE FILTER CONTAINS TWO STAGES; ONE FOR COMMON MODE NOISE [L3, C1, C2] AND ONE FOR CONDUCTED NOISE [L1, L2, C3]

DRAWN	P.PALUCH	<div><div>PICO</div><div>Electronics</div><div>143 Sparks Ave Village of Pelham, NY 10803</div></div>			
CHECKED	H. VIDAURRE				
QA		HCM SERIES			
MFG					
APPROVED		SIZE		DWG NO	REV
REVISION DATE	06/06/2023	C			1
		SCALE	NTS	www.picoelectronics.com	

4

3

2

1

D

D

C

C

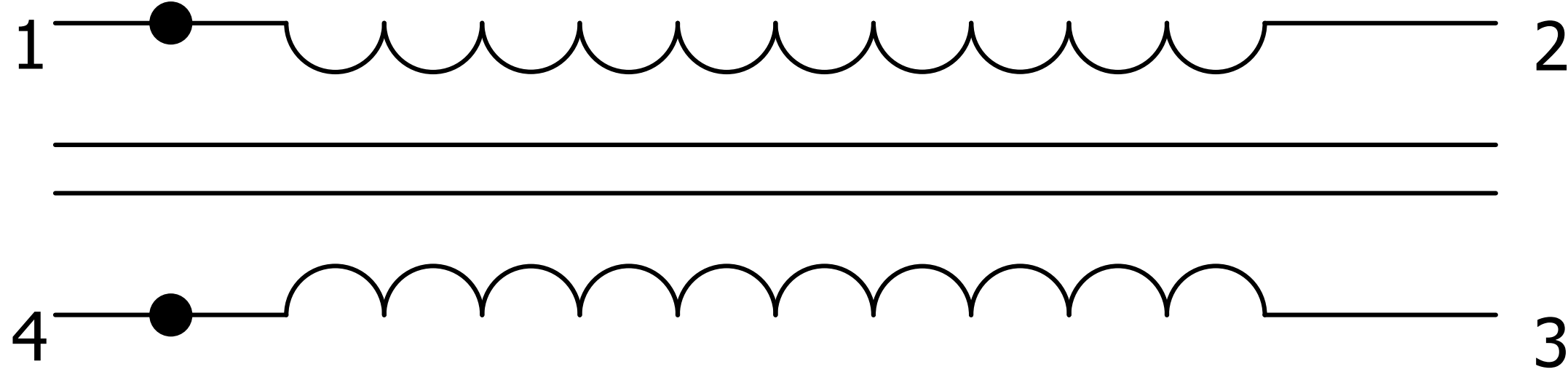
B

B

A

A

TERMINAL ARRANGEMENT [HCM SERIES]



DRAWN	P.PALUCH	<div>PICO</div> <div>Electronics</div> <div>143 Sparks Ave Village of Pelham, NY 10803</div>			
CHECKED	H. VIDAURRE				
QA					
MFG		<div>HCM SERIES</div>			
APPROVED					
REVISION DATE	06/06/2023				
		SIZE C		DWG NO	REV 1
		SCALE	NTS	www.picoelectronics.com	